

INTRODUCING...

**NABL ACCREDITED
A-Z PAINT AND COATING
TESTING LABORATORY**



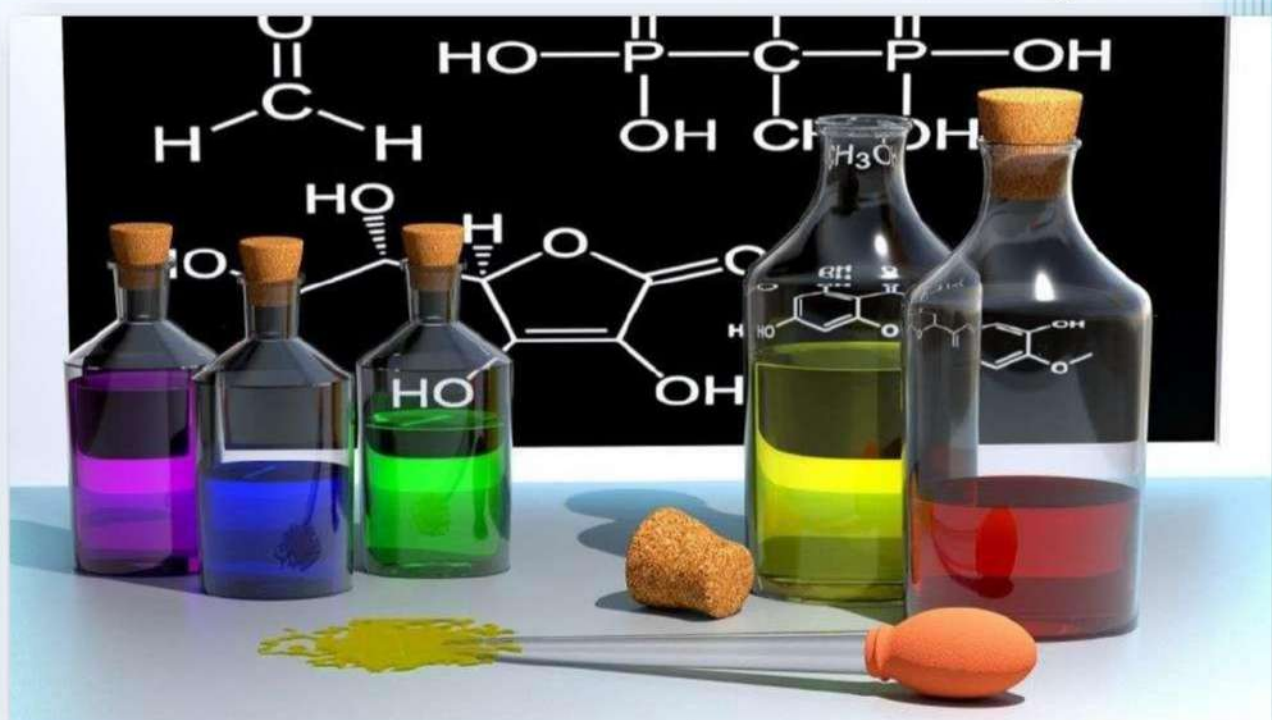
- A-Z Paint & Coating Testing Lab established in last 5 years.
- With over 5 years of experience in similar area, with an objective to provide in excellence in testing and analytical services.
- A-Z Paint & Coating Testing Lab, Navi Mumbai, is committed to provide reliable to its customer by adopting professionally acceptable procedures and method with measurements traceable to national & international reference standards.
- We are pleased to introduce ourselves as leading testing laboratory.
- Our lab provides excellent paint testing facilities.
- All types of paint samples solvent-based paint, water-based paints & all ready-mix paints. Also, Bituminous paint.
- Rapidly expanding base of 150+ customers already taking services from us.
- Our staff is well educated & experience holder we are proud of our Team.



PAINT TESTING PARAMETER

WET PAINT TEST

- Drying time
- Consistency
- Finish
- Colour
- pH
- Non-Volatile Matter
- Volatile Matter
- Water Content
- Mass in Kg/10L
- Wet Opacity
- Flash Point
- Viscosity by Flow Cup
- Stormer Viscosity
- Fineness of Grind
- Volume Solid
- Recoat Properties
- Storage stability test
- Zinc Phosphate Content
- Fitness to take a coat of Primer
- Resistance to Bleeding
- Sag Resistance
- Odour
- Settling Properties
- Leveling Properties
- Colour Diff. by Visual
- Dirt Pick up
- Volatile Content by Radiation
- Determination of hard dry and time to top coat
- Acid Value
- Phthalic Anhydride
- Iron Content
- VOC (GC-MS)
- Pot life
- Lead Content
- Ash Content
- Pigment Content
- Zinc Content by Titration



LONG TERM TEST

- Salt Spray Test
- Corrosion Test
- Humidity Test
- Temperature Test
- Water Vapor Permeability
- Carbon Dioxide Permeability
- Immersion Test
- Chemical Resistance
- Chemical Resistance of pipeline coating
- Resistance Dried film of Varnishes for water and Alkali
- Exposure Resistance
- Test for freedom from yellowing
- Resistance to Acid/Alkali
- Detergent Resistance
- Accelerated Weathering Test
- Xenon Arc Weathering Test
- Resistance to Liquid
- Evaluation Degree of Cracking
- ROHS Test
- REACH Test
- Anti-fungal Test
- Anti-algal Test
- EN 3900
- MOAH/MOSH
- FT-IR

MECHANICAL TEST

- Impact Test
- Flexibility & Adhesion Test
- Gloss Test
- Pull off Adhesion
- Pencil Hardness Test
- Scratch Hardness
- Dry Film Thickness
- Taber Abrasion
- Solvent MEK Rub Test
- Anti-Graffiti Test
- Cross Cut/Tape Adhesion
- Bend Test
- Tensile Properties
- Shore D/A Hardness
- Hiding power/Opacity
- Whiteness/Yellowness
- Color Fastness
- Resistance to Dry Rubbing
- Wet Film Thickness
- Color Measurements
- Chalk Resistance
- Wash ability
- Scrub Test



PAINT TESTING INSTRUMENTS AT OUR LABORATORY



Accelerated Weathering Test



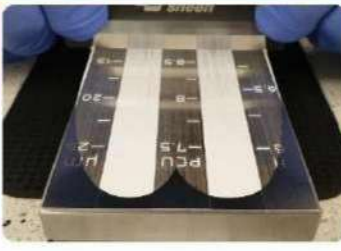
Adhesion Test



Density Test



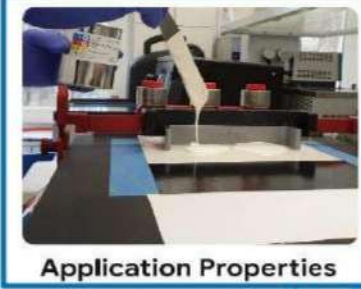
Gloss Test



Dispersion Test



Chemical Immersion Test



Application Properties



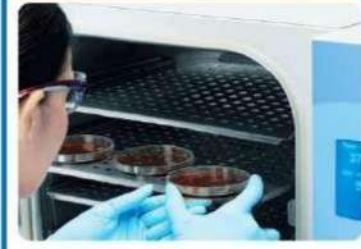
Volume Solid Test



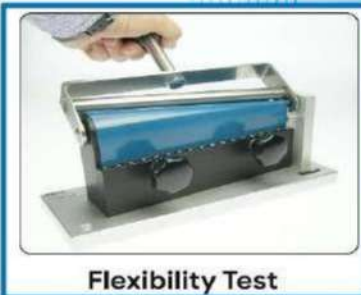
Viscosity Test



Spray Application



Solid Test



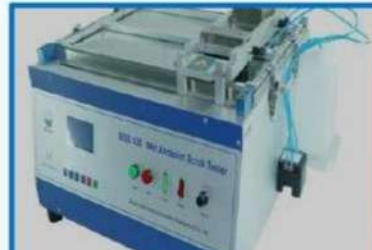
Flexibility Test



Impact Test



High Temperature Test



*I Hope you will give us Testing
Opportunity.....*

Contact Us: -

Mr. Ramesh B.
Website: - www.painttestings.com
Email Id: - info@painttestings.com
painttestings@gmail.com
Contact No: - +917020310288
+919326070840

Laboratory Address: -

B-118 Plot 11 & 11a Punit Industrial Premises Co-Op. Society
Limited,
Opp. Turbhe Railway Station, Thane Belapur Road, TTC, MIDC,
Turbhe, Navi Mumbai 400705

*Thank
you*